

Customs and Border Protection (CBP) Border Security Deployment Project (BSDP)

As America's frontline for homeland defense, U.S. Customs and Border Protection (CBP) is responsible for defending the border between the United States and Canada against the unauthorized entry of terrorists and terrorist weapons, illicit drugs, and illegal aliens.

In order to monitor and protect the nation against these unlawful admissions across the U.S. northern border, CBP engaged Sentrillion Corp. to install an intelligent video surveillance and security solution at 129 land Ports of Entry (LPOEs). Sentrillion's physical security system provides each LPOE with increased perimeter and internal security, enhanced situational awareness and personal safety for CBP officers, and a record of all port activities. Additionally, Sentrillion binds the frontline by unifying LPOEs to central command and control centers capable of monitoring port activities from remote locations. Sentrillion used a comprehensive system-of-systems approach that allowed maximum flexibility in the design of solutions for LPOE as each is unique in facility design, operational environment, and physical environmental factors.

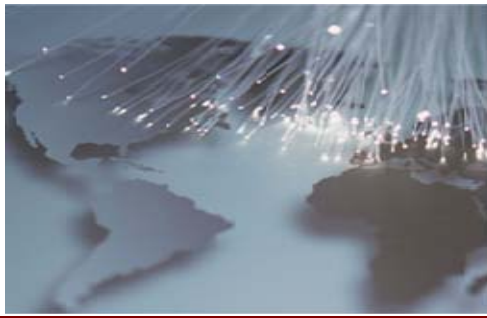


Headquarters: 1881 Campus Commons Drive, Suite 403, Reston, VA 20191 • T: (703) 390-5560 • F: (703) 390-5051

Reston, VA • Bethesda, MD • Sierra Vista, AZ


CBP BSDP: Operational Support Systems (Vehicles and Personnel) - Page 1 of 4

©2008 Sentrillion®. All Rights Reserved.



Operational Support Systems (Vehicles and Personnel)

Sentrillion created a software solution designed to assist with collecting necessary traffic information during LPOE operations. Information is available in both real-time and via archive, allowing the users at all levels to see immediate feedback, view and print traffic reports, maintain historical records, and conduct predictive analysis for use in their decision making processes for staffing and operational enforcement. The traffic support system (TigreEye) provides queue length, wait times, processing speeds per lane, and other tools to help manage traffic flow.



TigreEye

Logout

- Home
- Time Series Summary
- Totals by Lane
- Average CPM by Lane
- Queues by Lane
- Wait Times by Lane
- Time Series By Lane
- Time Series: Compare Lanes
- Advanced Reports
- What If Scenarios

Home

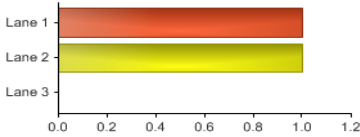
Metrics

Cars/Minute: 1

Average Wait Time: 10.62 minutes

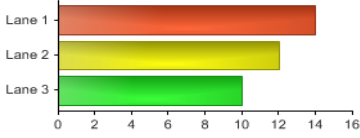
Traffic Flow in the last minute

Lane	Value
Lane 1	1
Lane 2	1
Lane 3	0



Traffic Flow in the last 15 minutes

Lane	Value
Lane 1	14
Lane 2	12
Lane 3	10



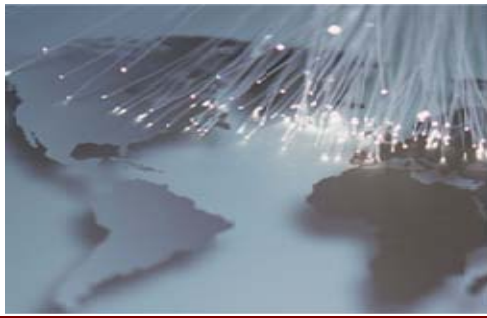
Copyright © 2008 by Sentrillion

Headquarters: 1881 Campus Commons Drive, Suite 403, Reston, VA 20191 • T: (703) 390-5560 • F: (703) 390-5051

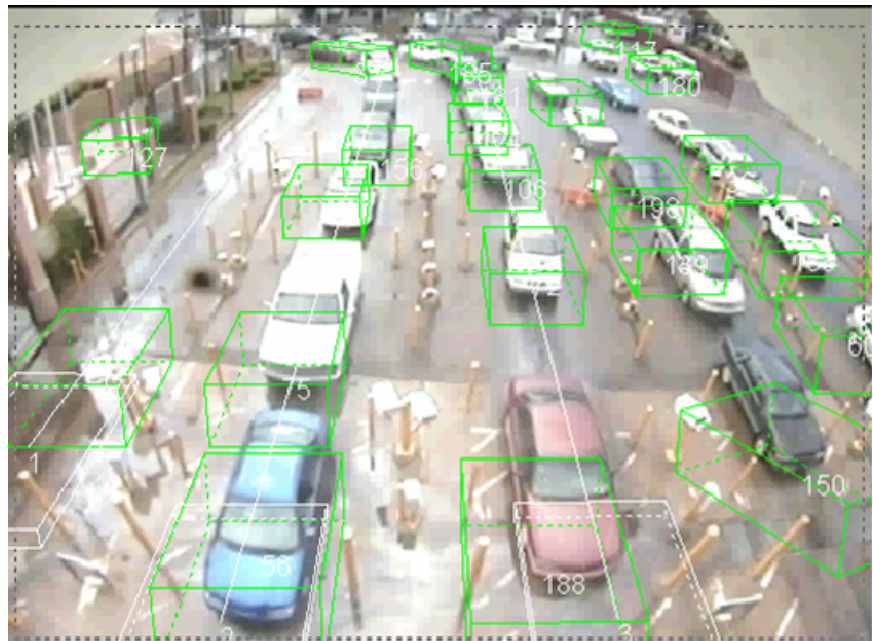
Reston, VA • Bethesda, MD • Sierra Vista, AZ

CBP BSDP: Operational Support Systems (Vehicles and Personnel) - Page 2 of 4

©2008 Sentrillion®. All Rights Reserved.

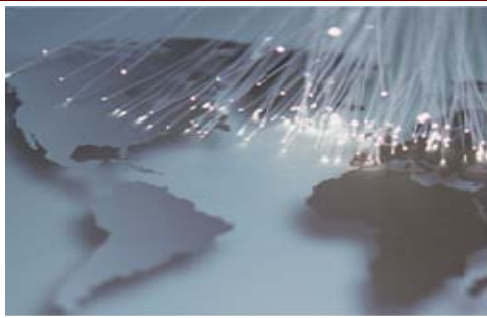


Sentrillion's solution uses automated video processing algorithms to identify, count, and track vehicles and their behavior through the site. A three dimensional grid is used during systems setup and does not require physical aids (lane markings) to discriminate between vehicle lanes. Data is updated every minute to provide real time reporting.

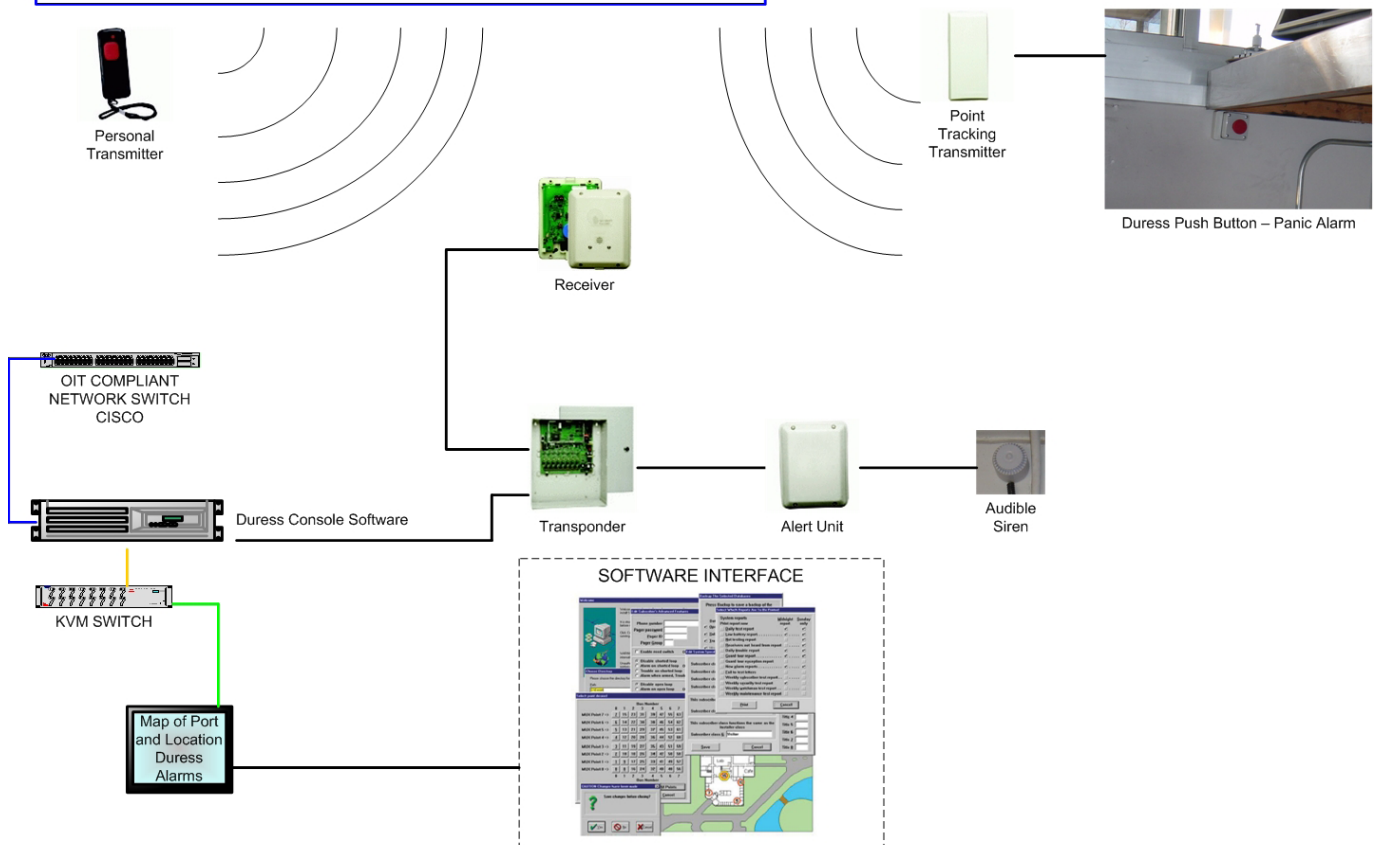


The Duress System is a wireless system that allows a person to signal for help during an emergency and/or that tracks the unauthorized movement of a person or an item. The central console software receives the alarm signal and shows a person or item's identification, location on a map (facility sketch, photo, or drawing), and the direction of travel. The operator uses this information to direct personnel to the scene of the emergency. The Duress System provides indoor floor-by-floor or outdoor coverage and patented testing and supervision features:

- Man-down
- Supervision Tracking
- Lanyard Snatch
- Auto tracking
- Silent Manual Alarm
- Low Battery Indication



DURESS



Headquarters: 1881 Campus Commons Drive, Suite 403, Reston, VA 20191 • T: (703) 390-5560 • F: (703) 390-5051

Reston, VA • Bethesda, MD • Sierra Vista, AZ

CBP BSDP: Operational Support Systems (Vehicles and Personnel) - Page 4 of 4

©2008 Sentrillion®. All Rights Reserved.